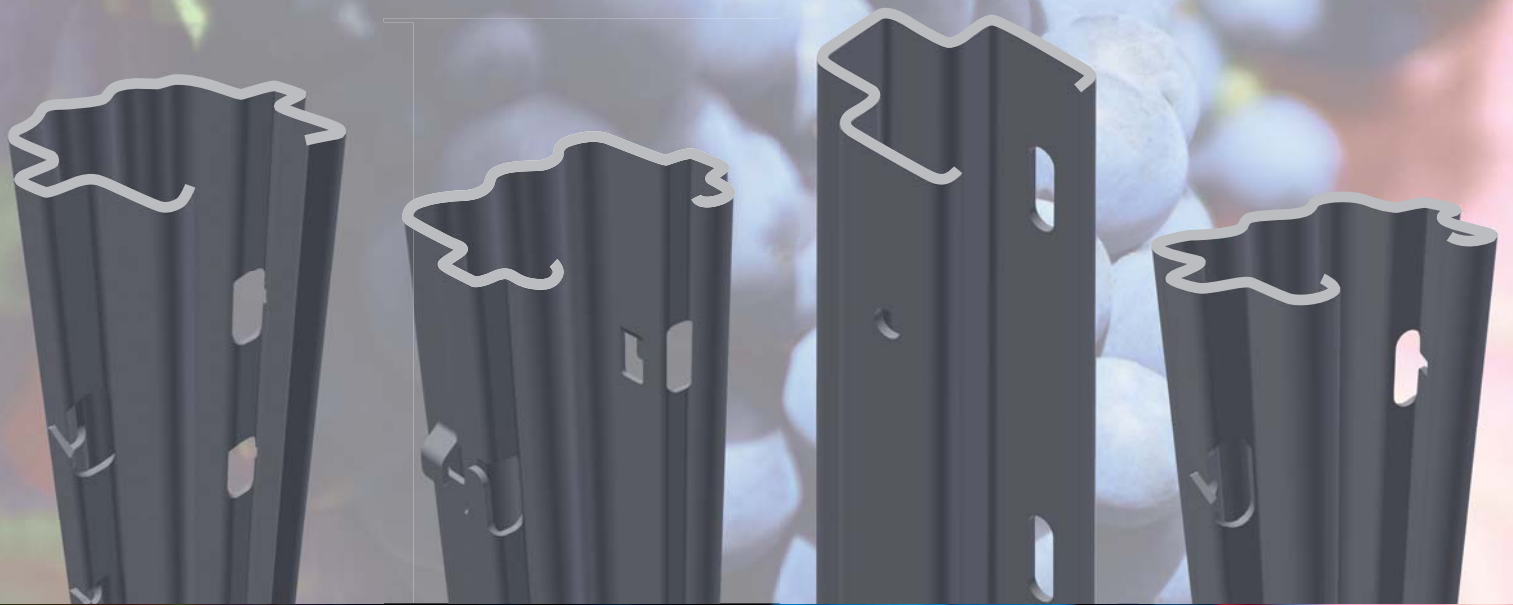


**LINUS®**  
Vineyard Poles



**LINUS® Vineyard Poles –  
quality wins**



Precisely planted rows are not just a sign of a well managed vineyard; they also present an important advantage when it comes to mechanised harvesting – an advantage further improved by the inward-facing hooks attached to LINUS® poles.

## LINUS® LIFT – a revival of hook design

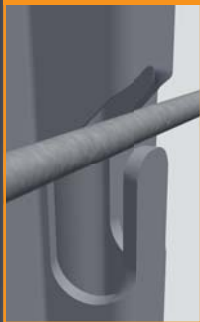
Assists the mechanised pruning of old wood

### Fast and easy to use

If something is tried and tested, it should be well-used. It is for this reason that we have decided to reinterpret the LINUS® LIFT hook design. LINUS® LIFT offers all the specific advantages of ease of use, including:

- Fast attachment of wires
- Fast, mechanised removal of wires
- Allows stumps to be lifted and cut out
- No collisions between the hooks and the detection machine
- Fast hanging of wires during the vegetation period
- Patented diagonal-cut design

**NEW**



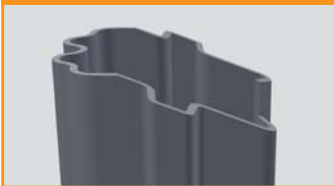


## LINUS® Vineyard Poles – quality wins

### Using innovation to stay one step ahead

Here at voestalpine Präzisionsprofil GmbH, we have been developing and further improving vineyard poles for 40 years, always in close cooperation with vine growers and experts in oenology. As the leading supplier of vineyard poles, we have always relied – with the evidence backed up a million times over – on our tried-and-tested Galfan coating that is considerably more resistant to corrosion than strip-galvanising. Reduced emissions of zinc also helps to protect your valuable growing land. All LINUS® poles are fitted with inward-facing hooks for full compatibility with grape-harvesting machines. The patented diagonal-cut design of LINUS® poles ensures, when they are being knocked into the ground, that the impact pressure acts only on the robust rear side of the poles, thereby virtually eliminating the possibility of deformation. LINUS® poles are 100% recyclable, and their special finish is particularly environment-friendly.

**PATENTED**  
diagonal-cut design



### Sticking to what we do best

Our partners have convinced us of the need to tighten up our range, so we will be offering the following LINUS® vineyard products in the future:

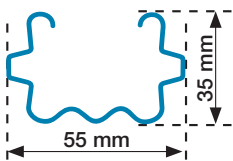
- LINUS® CLASSIC 3R – the robust, three-ribbed design for higher-growth plants
- LINUS® CLICK 3R – the three-ribbed design with patented wire-fixing system. Ensures that wires remain securely attached, even on difficult terrain
- **NEW!!!** LINUS® LIFT 3R – a new approach to hook design; and the shape of the future when it comes to the mechanised removal of stumps
- LINUS® CLASSIC 2R – the lightweight two-ribbed design, ideal for low-lying, wind-protected plantations with low yield-potential
- LINUS® end-pole – the highly-robust end-pole, with double-box design for maximum stability



Our good name is the guarantee of quality of our best wines. This is why we are always very careful about how our vines are cultivated. The best results depend on a wide range of factors. In addition to soil and climate, selection of the right vineyard poles is also important, in order to operate a low-maintenance vineyard and meet the needs, in the best possible manner, of grape-harvesting machines. It is for this reason that we have opted for the LINUS® pole. It is robust, long-lasting, and has proven itself over decades. We are well and truly convinced.

#### LINUS® CLASSIC 3R

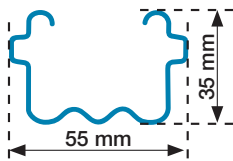
The robust three-ripped design



- Patented diagonal-cut design
- For higher-growth plants and demanding specifications
- PP 5084, wall thickness of 1.25 mm
- PP 5094, wall thickness of 1.50 mm

#### LINUS® CLICK 3R

The most secure three-ripped design

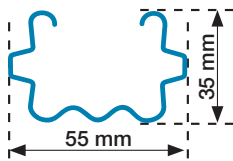


- Patented diagonal-cut design
- With patented securing system to prevent wires from popping out
- PP 9684, wall thickness of 1.25 mm
- PP 9685, wall thickness of 1.50 mm

#### NEW!!!

#### LINUS® LIFT 3R

The fastest three-ripped design

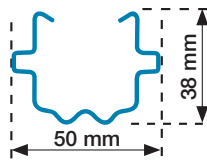


- Patented diagonal-cut design
- Fast, mechanised removal of wires
- Assists the fast, mechanised removal of stumps
- Ideal for mechanical removal before the grape harvest
- PP 5084, wall thickness of 1.25 mm
- PP 5094, wall thickness of 1.50 mm

#### LINUS®

#### replacement pole 2R

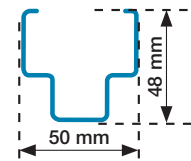
The lightweight two-ripped design



- Patented diagonal-cut design
- For low-lying, wind-protected plantations with low yield-potential
- PP 9650, wall thickness of 1.25 mm

#### LINUS® end-pole

The design for maximum stability



- Double-box design
- Highly robust
- Ideal for direct tensioning
- Special anchor-wires prevent lateral twist
- PP 5395, wall thickness of 2.25 mm

LINUS® poles are available in Galvan-coated steel (strip-galvanised version also available to order).

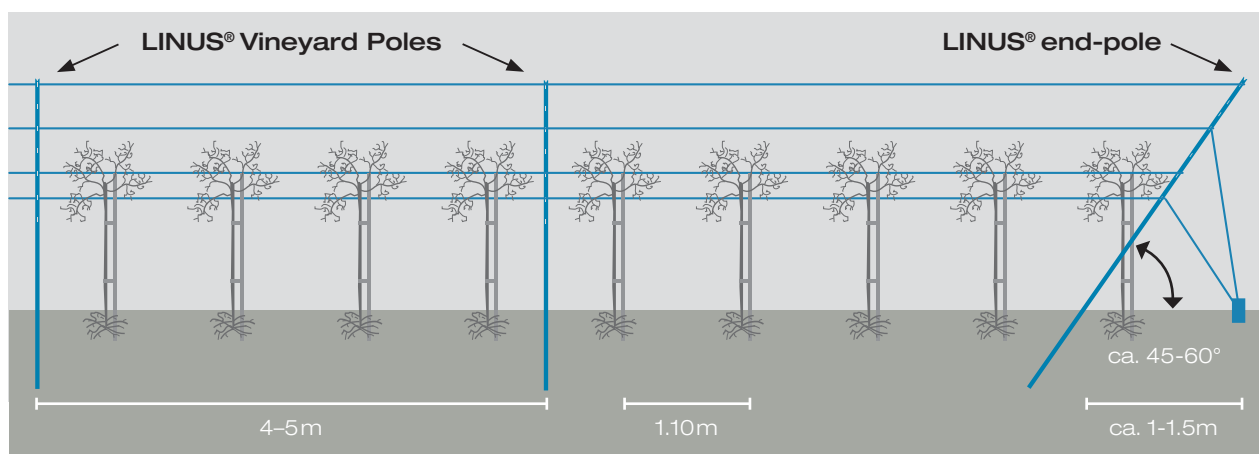
## Using LINUS® Vineyard Poles – tips that bear fruit

The distance of four to five metres between one LINUS® poles and the next should not be exceeded. We recommend a shortening of this distance for use in high-wind areas. LINUS® poles should be put into the ground at a minimum depth of 70 cm. When positioning the LINUS® end-pole, ensure that it is placed at an angle of 45° – 60°, and that it is knocked in 20 cm deeper than the other LINUS® poles in the row. Double-anchoring to secure the end-pole is also recommended. This will ensure even greater stability for the row of vines concerned.



**Useful tip:** You can use LINUS® protective caps on both stainless-steel and plastic-covered wire.

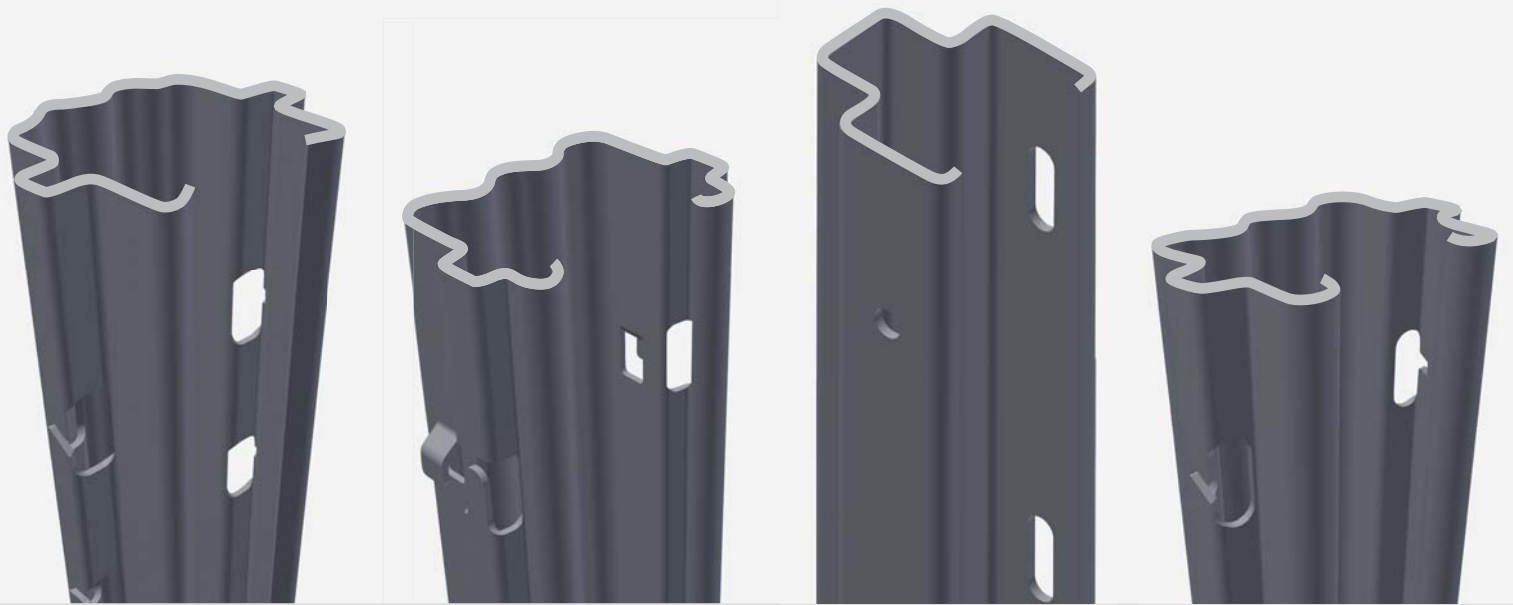
LINUS® poles are designed for easy hydraulic insertion into the ground. Drill a hole first, before inserting into stony ground. LINUS® poles can also be driven in easily and quickly with a manually-operated ram.



## Lengths and wall thicknesses

Lengths	LINUS® CLASSIC 3R	LINUS® CLICK 3R	NEW!!! LINUS® LIFT 3R	LINUS® replacement pole 2R	LINUS® end-pole
2000 mm				✓	
2200 mm					
2300 mm	✓	✓	✓		
2400 mm	✓	✓	✓		
2500 mm	✓	✓	✓		✓
2700 mm	✓	✓	✓		
2800 mm					✓
Wall thicknesses	PP 5084, 1.25 mm PP 5094, 1.50 mm	PP 9684, 1.25 mm PP 9685, 1.50 mm	PP 5084, 1.25 mm PP 5094, 1.50 mm	PP 9650, 1.25 mm	PP 5395, 2.25 mm

Further lengths and other versions are available upon request.



**voestalpine Präzisionsprofil GmbH**

Franz-Tilgner-Straße 10  
50354 Hürth, Germany  
T. +49/2233/6116-0  
F. +49/2233/6116-16  
[www.vineyardpoles.com](http://www.vineyardpoles.com)

**voestalpine**

ONE STEP AHEAD.